

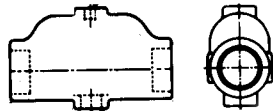
# Hydronic Specialties and Circulator Pumps



Hot Water Maker



Expansion Tank



Air Purger



Air Vent

Code #	Description	Model #
--------	-------------	---------

### **Boilermate Indirect-Fired Water Heater**

Uses any hot water boiler or generator to supply domestic hot water more efficiently than tankless coils and separate direct-fired units. Rapid recovery saves fuel. Proven three shell storage system keeps water hot up to 12 hours. Heat exchanger with double wall tubing. Prewired. Lifetime warranty.

445-0455	41 gallon capacity, 48" high x 22" diameter	WH41-LDW
----------	---	----------

### **Expansion Tanks • Non-Potable Water**

Maximum Working Pressure: 100 PSI. Maximum Operating Temperature: 240 deg. F. System Connection: 1/2" MPT. Shipped with standard 12 PSI air charge which may be changed on the job to suit installation conditions.

445-0520	Diaphragm Expansion 2 Gallon Tank 11-1/2" high x 8" diameter.	MLEX15
445-0521	Diaphragm Expansion 4.4 Gallon Tank 14" high x 11" diameter.	MLEX30

### **Air Purger**

Models furnished with tappings indicated for installation on the main and for mounting.

445-0600	Air Purger 1" FPT	431-6
445-0610	Air Purger 1-1/4" FPT	432-6

### **Air Vent Automatic**

For hot water systems. Float vent up to 45 PSI

445-0760	Air Vent Automatic 1/8 MPT	400-3
----------	----------------------------	-------

# Caleffi Boiler Products

## Boiler Trim Kits

NA553 Series

The Caleffi NA553 Boiler Trim Kit is available in 10 configurations and combines 8 boiler installation components into one box. This kit matches the necessary components for boiler installations into a simple package. The NA553 takes all the guess work out of selecting components for a simple installation.

**The kit includes:**

- 1 Caleffi DISCAL® Air Separator
- 1 Backflow Preventer
- 1 AutoFill™
- 1 Expansion Tank Check Valve
- 2 Brass Nipples
- 1 Brass Tee
- 1 Expansion Tank



1" NPT Boiler Trim

NA553362

1 1/4" NPT Boiler Trim

NA553372

**NPT Connections**

Kit Part Number	NA553362	NA553372
DISCAL®	551006A 1" NPT	551007A 1-1/4" NPT
AutoFill™	573002A	573002A
Backflow Combo.	1/2" NPT	1/2" NPT
Check Valve	561402A	561402A
Tank	4.4 gal	4.4 gal
Nipples	3" Brass	3" Brass
Tee	NPT Brass	NPT Brass

## Magnetic Dirt Separators

5463 Series

The DIRTMAG® magnetic dirt separator removes both ferrous and nonferrous impurities continuously, featuring powerful removable magnets that remove up to 100% of the ferrous impurities, including magnetite, that can form in a hydronic system. The DIRTMAG® has 2 1/2 times the removal performance of a standard dirt separator.



1 1/4" NPT Female Connections

546307A

1 1/2" NPT Female Connections

546308A

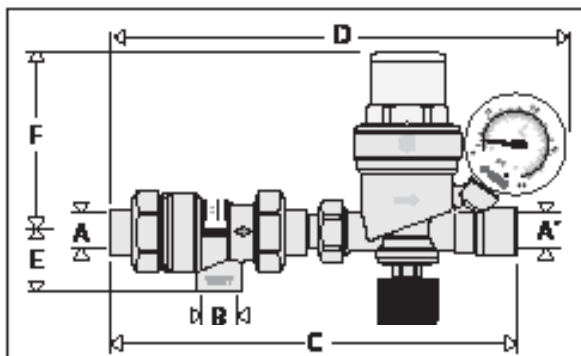
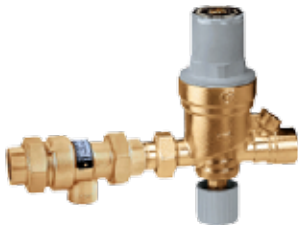
## AutoFill™ Pre-Adjustable filling units & backflow preventer

573 Series

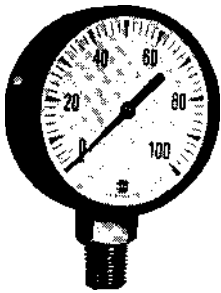
Dual check continuous pressure backflow preventer with atmospheric vent.

1/2" NPT Inlets, 1/2" NPT Female Oulets

573002A



Code	A	A'	B	C	D	E	F
573002A	1/2" NPT	1/2" NPT	1/2"	3/2"	—	1 1/2"	4"



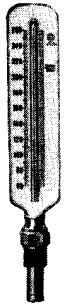
G61-100

Code #	Description	Model #
--------	-------------	---------

**Pressure Gauges Stem Mount**

Generally used for hydraulic applications, such as presses, jacks and pumps, these specially designed heavy duty gauges can also withstand other rigorous pulsating and vibrating high pressure industrial applications. Ledge Mount.

Code #	Size	Pressure	Mounting	Model #
445-2730	2-1/2 inch	100#	1/4" LM	G61-100



J40-501



J40-503

**Glass Tube Thermometers**

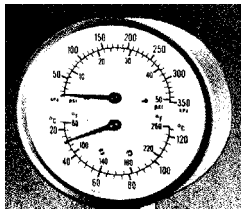
For direct installation on boilers and water heaters. Range 20 deg. to 260 deg. F. Scale length 5". 1-3/8" insertion length, 1/2" MPT connections. Brass Mounted.

445-3050	Thermometer Straight	J40-501
445-3070	Thermometer Angle	J40-503

**Boiler Gauge**

Specially constructed for use on all hot water heating boilers, these combination gauges give accurate indication of temperature and pressure. Gauges are designed to withstand the conditions normally encountered on domestic heating systems. 1/2" connections.

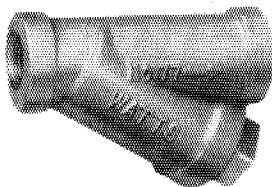
445-3150	Boiler Gauge Straight	HD11A4H52160L
445-3170	Boiler Gauge Angle	HD11C4H52148L



HD11

**Cast Iron "Y" Type Strainers, Screwed End Connections**

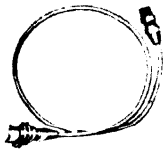
For liquid or steam service. They are furnished with 250 lb. extra heavy iron body. Install strainers upstream to protect valves, regulators, solenoids and meters from dirt, rust and pipe scale. Self-cleaning can be accomplished by opening the valve or plug connected to the blow-off outlet. Iron retainer cap and asbestos gasket, straight threads and tapped for closure plug. Furnished with 20 mesh stainless steel screen. Working pressure - Non-shock. Steam pressure - 250 psi at 406 deg.F. Water, Oil, Gas - 400 psi at 100 deg.F.



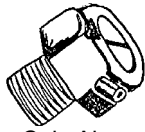
77S

445-3820	IPS 3/4	77S
445-3825	IPS 1	77S
445-3835	IPS 1-1/2	77S
445-3840	IPS 2	77S

Code #	Description	Model #
--------	-------------	---------



Coin Air Assy.



Coin Air Valve



Loose Key Air Valve



Loose Key

**Keeney Air Vents - 1/8" MIP**

445-4180	Coin Air Valve Assembly with 3/16" OD x 21" tube	5
445-4190	Coin Air Valve	4
445-4200	Loose Key Air Valve	2K
445-4210	Key Only for #2K Air Valve	3

**Twin Flo II Kickspace Heaters - Models K42 and K84**

Compact and functional Kickspace Heaters are designed for those small, tough-to-heat areas. Advanced design allows for installation above doors, under kitchen and bathroom cabinets, in a stair riser, on a bookshelf. Effective range 10-15 feet of uniform heating.

445-5150	Toe Space Heater	K-42
----------	------------------	------



**Beacon Morris**



# Mainline Self-Seal Pipe Insulation



Code #	Description	Model #
--------	-------------	---------

### Mainline Pipe Insulation

Polyelfin Pipe Insulation is low density, polymer-based and easy-to-apply tubing products that are available in a wide variety of sizes with a self-sealing design. The self-sealing design has a green release liner that is both easy to see and peel.

Code #	ID	CTS	IPS	Ctn Qty	R-Value	
<b>3/8" Wall x 6' Lengths</b>						
.1029594	1-1/8	1	3/4	31	2.98	ML11812SS
.1029595	1-3/8	1-1/4	1	25	2.88	ML13812SS
<b>1/2" Wall x 6' Lengths</b>						
.1029590	(*) 5/8	1/2	3/8	50	3.54	ML5812SS
.1029592	(*) 7/8	3/4	1/2	40	3.15	ML7812SS
.1029596	1-5/8	1-1/2	1-1/4	20	2.97	ML15812SS
.1029598	2-1/8	2	—	14	2.71	ML21812SS
.1029599	2-3/8	—	2	12	2.71	ML23812SS
<b>3/4" Wall x 6' Lengths TUNDRA (MN Code Approved)</b>						
445-8206	(*) 1-1/8	1	3/4	17	4.8	11834T
<b>1" Wall x 6' Lengths TUNDRA (MN Code Approved)</b>						
445-8270	(*) 3-1/2	—	3	12	5.4	31201T

(\*) **Meets 2015 Minnesota Codes**

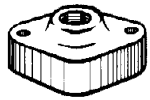


UP15-42F, UPS15-58FC,  
UP26-64F, UP26-99F

**BRUTE**

Code #	Description	Model #
<b>Grundfos Pumps</b>		
<p>Flanged Pumps for Open and Closed hydronic systems. Grundfos pumps are single-stage, direct drive centrifugal pumps. The wet rotor design eliminates the need for routine maintenance and lubrication. Available with cast iron, stainless steel and bronze volutes, Grundfos circulators are designed for domestic and light commercial applications in open and closed systems. These pumps can be operated up to system pressures of 145 psi with maximum fluid temperatures of 230 deg.F and corresponding ambient temperatures of 104 deg. F. Mixtures of water and ethylene or propylene glycol solution up to 50% by volume may also be pumped. Less flgs.</p>		
<b>Brute</b>		
445-7760	Pump Cast Iron - closed system, 1-speed, 1/25 HP, 85 Watts, 115 Volts, 0.76 amps, 2475 RPM Capacitor - 10MF,160V	UP15-42F
<b>Super Brute</b>		
445-7751	Pump Cast Iron- closed system 3-speed, 1/25 HP, Integral Check Valve, 115 Volts	UPS15-58FC
445-7815	Pump Cast Iron - closed system 1-speed, 1/12 HP, 185 Watts, 115 Volts, 1.62 amps, 2650 RPM Capacitor - 8MF/180V	UP 26-64F
445-7826	Pump Cast Iron, 1/6 HP, 115 Volts	UP 26-99F

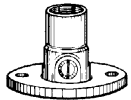
Code #	Description	Model #
--------	-------------	---------



CI Flange



Bronze Flange



Isolation Valve



3/4 Union Sweat

**Flange Ordering Chart**

Flange Number	Description	Use with models
51 9755	3/4" Bronze Isolation	UP15-42F
51 9756	1" Bronze Isolation	
51 9601	3/4" Cast Iron	UP26-64F
51 9602	1" Cast Iron	UP26-96F
51 9603	1-1/4" Cast Iron	UP26-99F
51 9604	1-1/2" Cast Iron	
51 9651	3/4" Bronze Sweat	UP15-42SF
51 9652	1" Bronze Sweat	
51 9755	3/4" Bronze Isolation	
51 9756	1" Bronze Isolation	
53 9605	1-1/2" Cast Iron	UP43-75F



**HVAC Tapes**

445-8326	Duct Tape 2" x 60 Yd. - Black	86-195722
445-8321	Duct Tape 2" x 60 Yd. - Silver Heavy Duty Grade	86-149263
445-8348	All Weather Dead Soft Aluminum Foil Tape 3" x 50 Yd.	86-216478
445-8346	UL Foil Tape 2" x 50 yds.	86-232032
445-8350	Rheem 2" x 60 yds. 3M Venture Line Set Tape	1507





Circulator

Code #	Description	Model #
--------	-------------	---------

**Model 0011 Cartridge Circulator**

445-5010	1/8hp Cartridge Circulator	0011-F4
445-5705	Cartridge	0011-009RP

**Switching Relay**

The Taco Switching Relay is the best choice for all your zoning needs, with advanced PowerPort Cards, external diagnostic lights, switchable priority and contractor friendly PC board layouts. Combined with the time proven reliability of the “00®” family of circulators and thermostats, total system integration is achieved.

**Switching Relays**

Product Number	Number of Zones	Transformer Voltage	Maximum Combined Load	Dimensions of Enclosure		
				Width	Height	Depth
SRSOI	1 Zone	120 VAC Input	7.2 amps	4 1/4"	5 1/4"	2 3/4"
SR502	2 with Priority	120 VAC Input	15 amps	10 1/4"	6 3/4"	2 3/4"
SR503	3 with Priority	120 VAC Input	15 amps	10 1/4"	6 3/4"	2 3/4"
SR504	4 with Priority	120 VAC Input	20 amps	10 1/4"	6 3/4"	2 3/4"
SR506	6 with Priority	120 VAC Input	20 amps	11 3/4"	7 1/2"	3"

445-5710	1 Zone Relay	SR501
445-5720	3 Zone Relay w/ Priority Switch	SR503



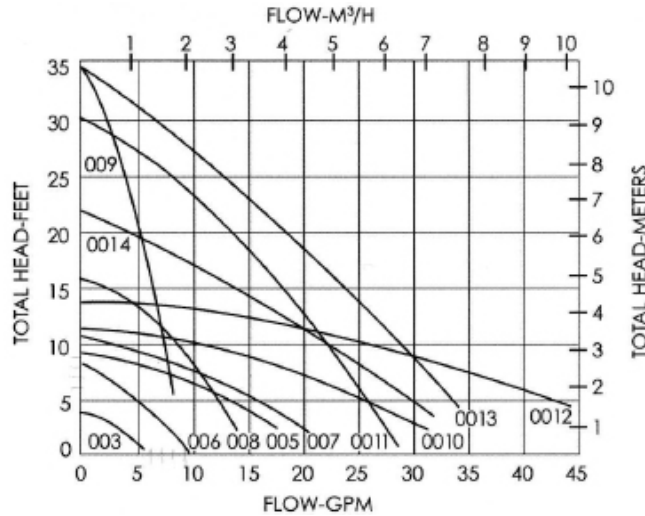
Code #	Description	Model #
--------	-------------	---------

**Model 007 Cartridge Circulator**



The Taco 007 Cartridge Circulator is the most popular hydronic circulator sold today. With its field serviceable cartridge design, the compact 007 provides quiet, efficient operation and unmatched reliability. The self-lubricating, maintenance free design and flow characteristics make it the ideal hydronic circulator for a wide range of applications.

445-5000	Cartridge Circulator	007-F7
----------	----------------------	--------



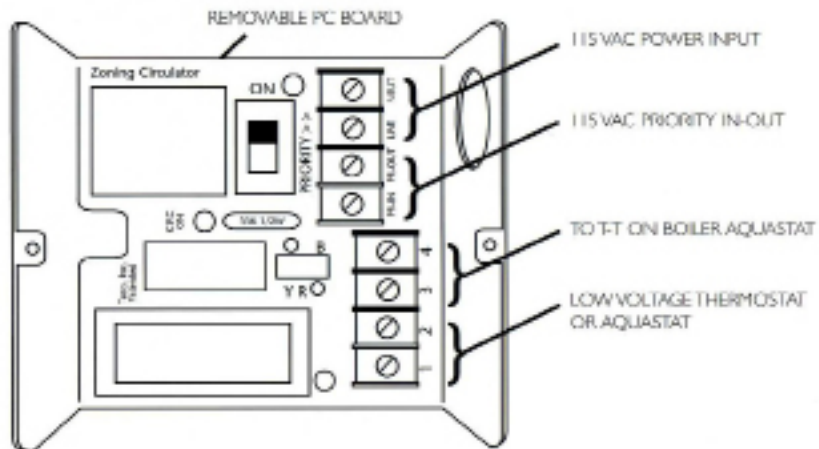
**Priority Zoning Circulator**



The patented Taco Priority Zoning Circulator combines the reliability of the “00” circulator with the convenience and efficiency of a switching relay. With a built-in transformer, relay and priority switch, all the wiring is done directly to the circulator’s PC board, making it ideal for adding a zone or an indirect hot water heater. Now available with optional integral flow check (IFC®).

445-5005	1/25 HP Cast Iron Flanged Circ. Pump	007-ZF5-9
----------	--------------------------------------	-----------

**PC Board Layout and Electrical Hook Up**



**Model ZVC405 Zone Valve Control**

445-5715	3-Zone Valve Control	ZVC405
----------	----------------------	--------



## Hot water without the wait

Before Grundfos, hot water recirculation solutions were difficult, if not impossible. Now, installations in both new construction and existing homes are quick, easy and profitable.



### **Comfort PM Auto - Whole House Hot Water Recirculation System**

The Comfort PM Auto range sets new standards for energy-efficient hot water recirculation in residential homes. Thanks to a low noise permanent magnet motor, energy consumption is reduced to as little as 5-8.5 W. Utilizing AUTOADAPT ensures the pump only runs when required, so the result is maximum comfort with lower wait times for hot water as well as reducing water and electrical waste.

- Easy installation
- Mimize water waste
- Lower energy consumption
- Learns and adapts to homeowner's water temperature needs

445-7757      Comfort PM Auto      UP 10-16 A PM BN5/LC



### **Comfort System - Single Sink Hot Water Recirculation System**

The water circulation system that eliminates cold water runoff at the faucet using a bypass valve and pump with a timer to control water flow.

- In retrofits, the Comfort System bypass valve makes it all possible with no return line and no need for electricity under the sink
- A wet rotor design for whisper-quiet and maintenance-free operation.

445-7755      Comfort System Retrofit      UP 15-10 SU7P TLC



### **Comfort Valve Kit for Hot Water Recirculation Systems**

445-8005      Comfort Valve Kit - Bulk      595926